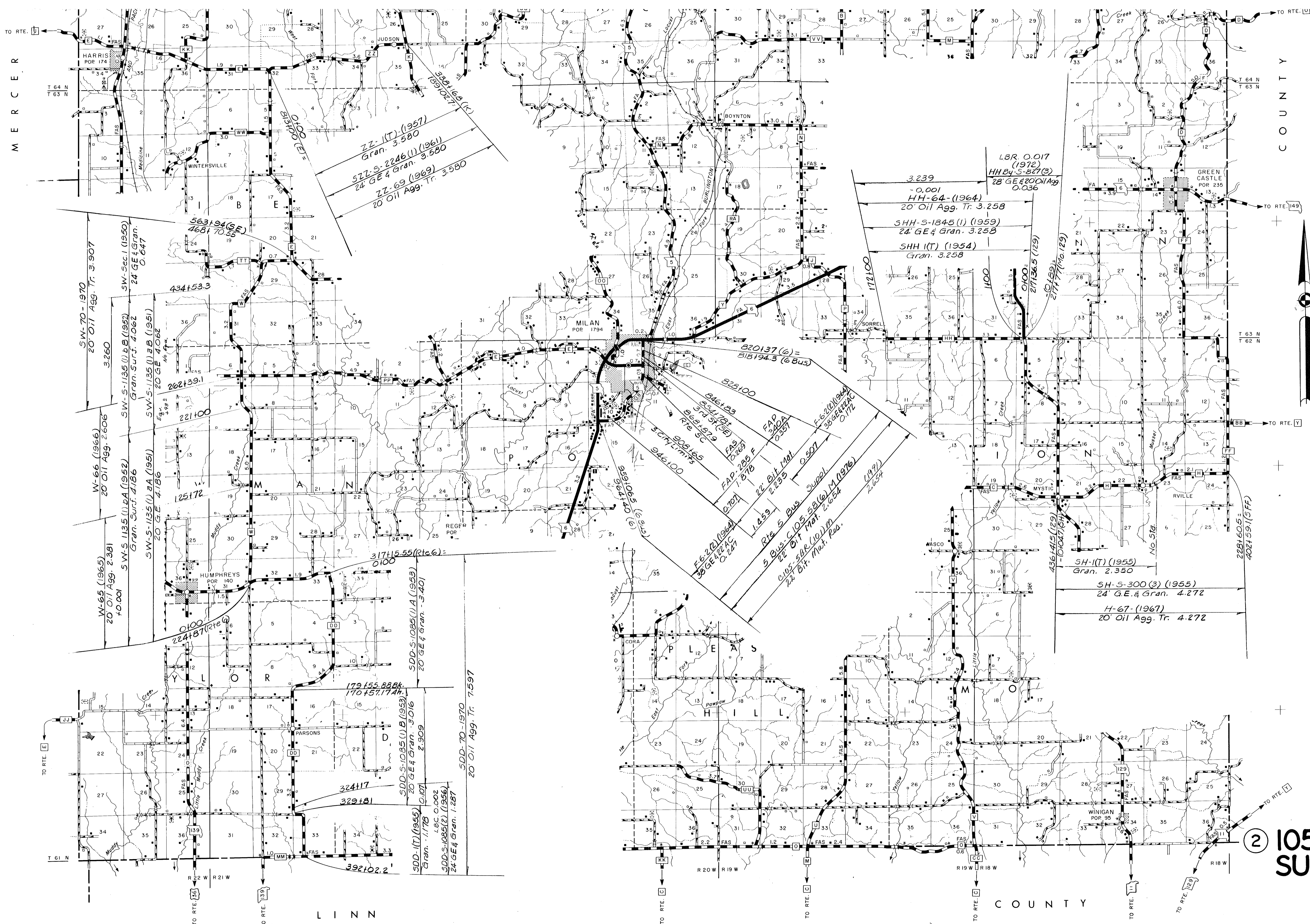


MERCER

COUNTY



ROUTES  
 BUS.5  
 DD  
 WW  
 HH  
 H  
 ZZ

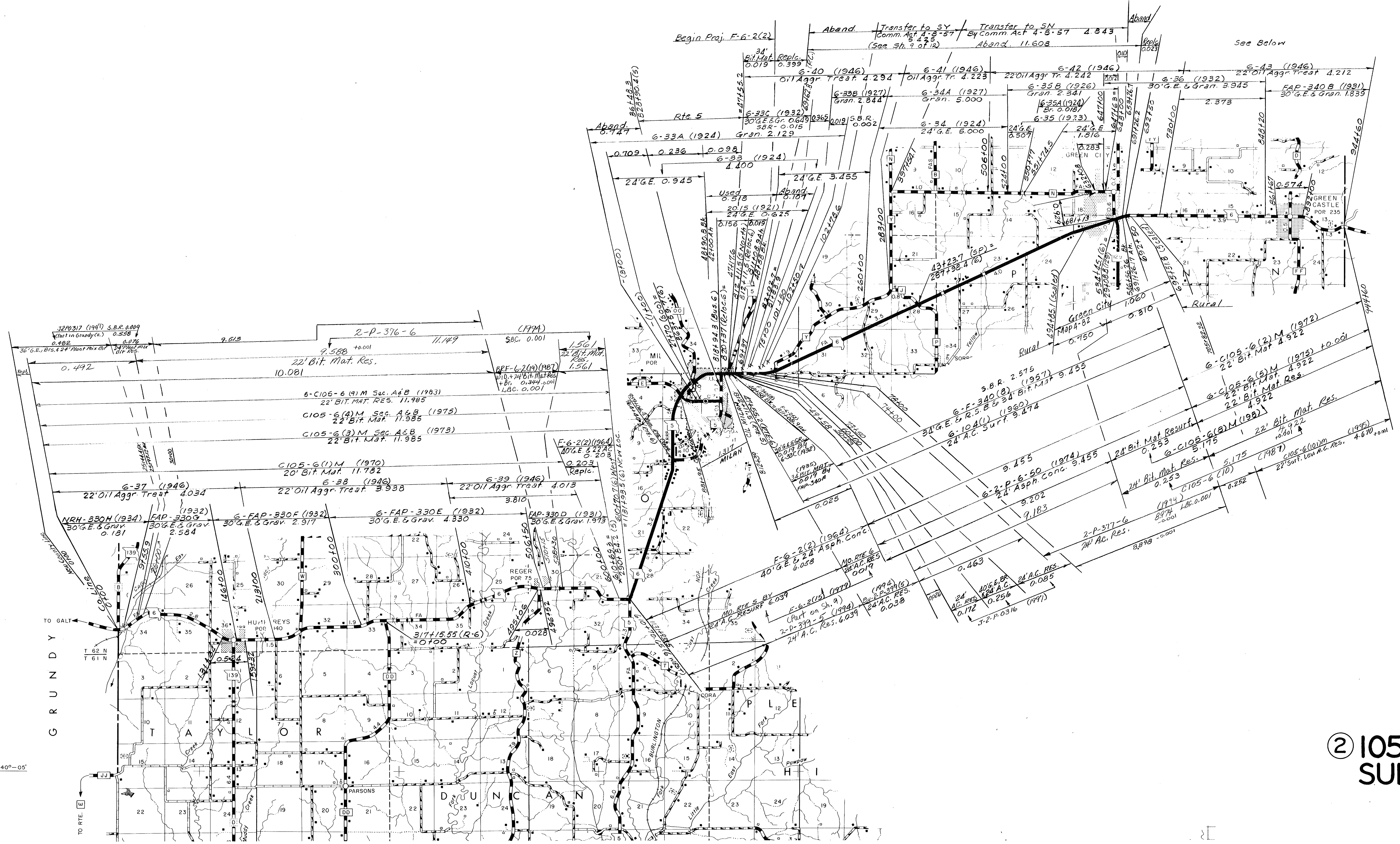
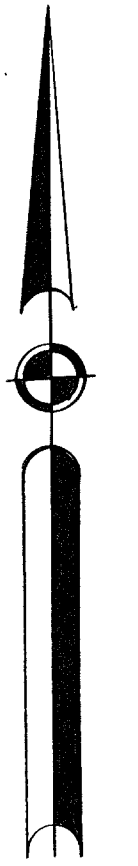
② 105 SHEET / OF 12  
 SULLIVAN

L I N N

C O U N T Y

40°-05'





ROUTE  
6  
5 Part

② 105 SHEET 2 OF 12  
SULLIVAN

93°-25'  
40°-05'

TO GALT  
TO RTE. E

TO RTE. E

TO RTE. E

TO RTE. E

TO RTE. E

TO RTE. E

TO RTE. E

TO RTE. E

TO RTE. E

TO RTE. E

TO RTE. E

TO RTE. E

TO RTE. E

TO RTE. E

TO RTE. E

TO RTE. E

TO RTE. E

TO RTE. E

TO RTE. E

TO RTE. E

TO RTE. E

TO RTE. E

TO RTE. E

TO RTE. E

TO RTE. E

TO RTE. E

TO RTE. E

TO RTE. E

TO RTE. E

TO RTE. E

TO RTE. E

TO RTE. E

TO RTE. E

TO RTE. E

TO RTE. E

TO RTE. E

TO RTE. E

TO RTE. E

TO RTE. E

TO RTE. E

TO RTE. E

TO RTE. E

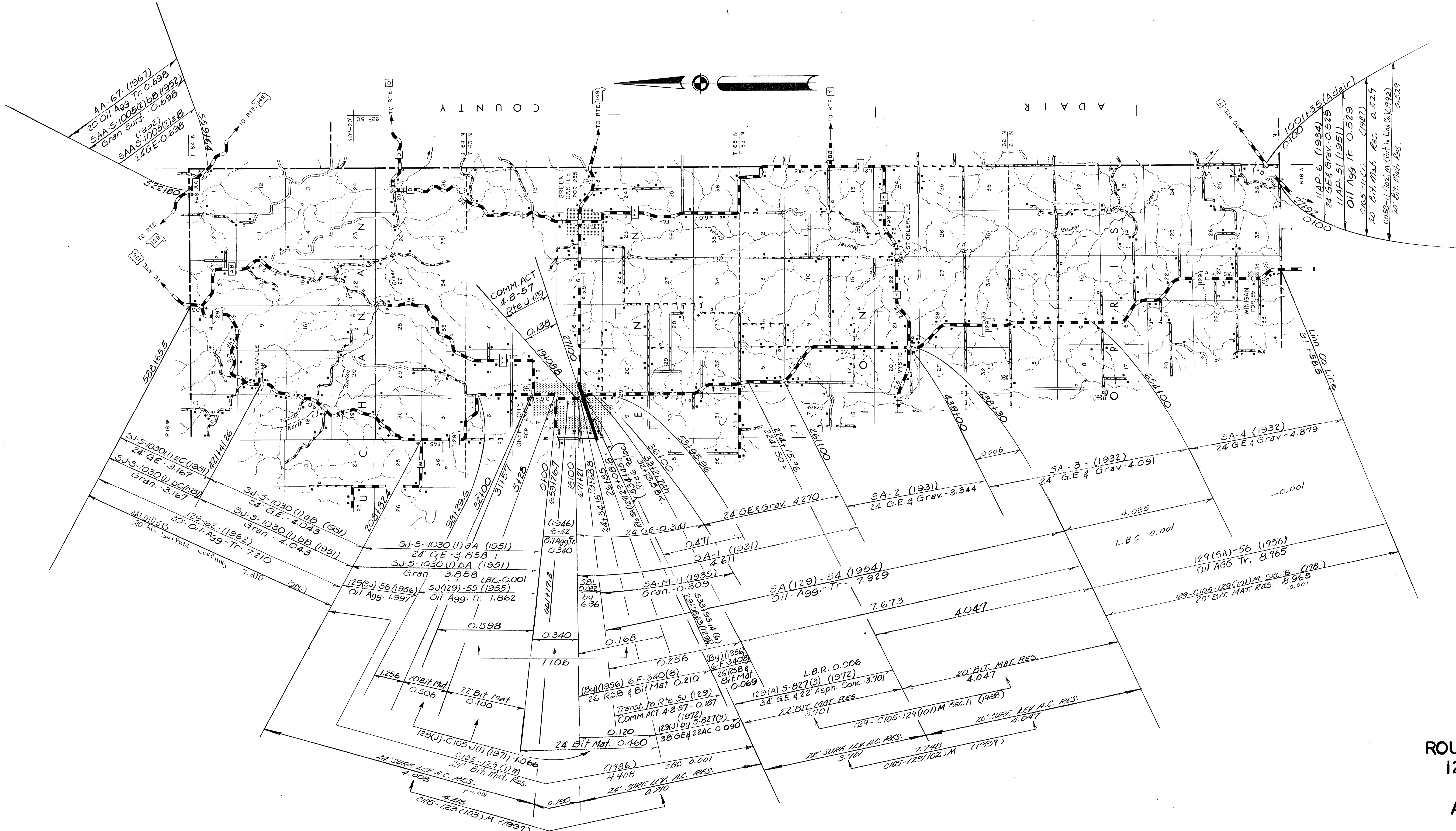
TO RTE. E

TO RTE. E

TO RTE. E

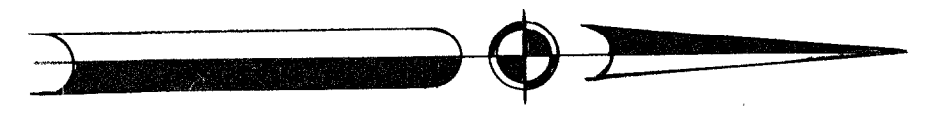
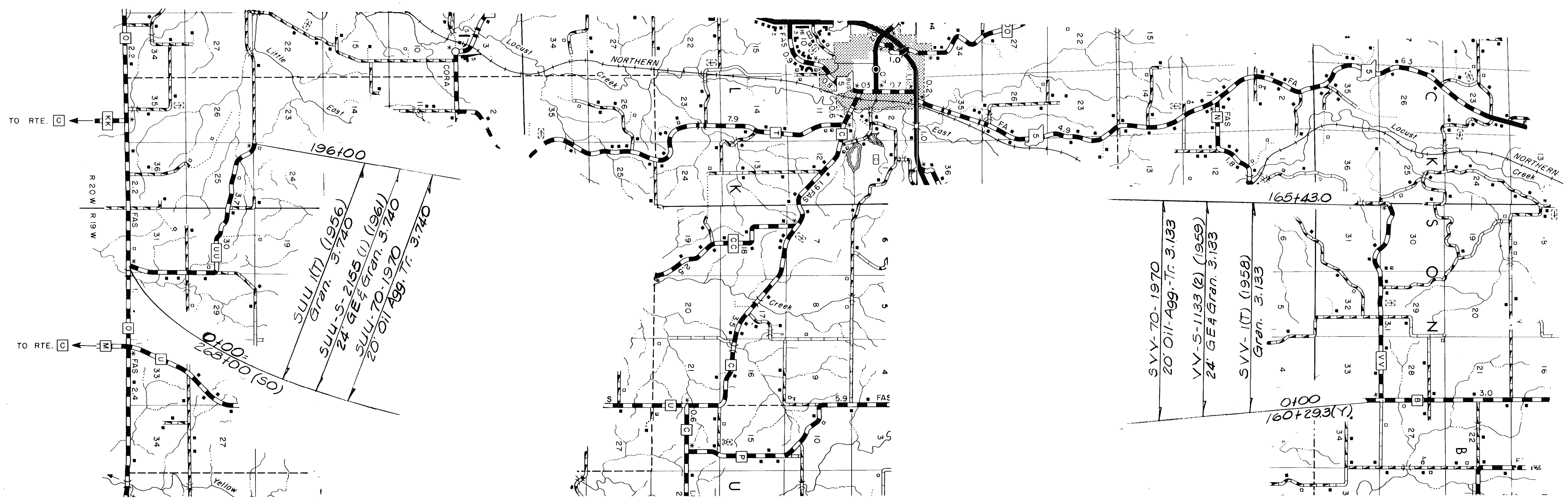
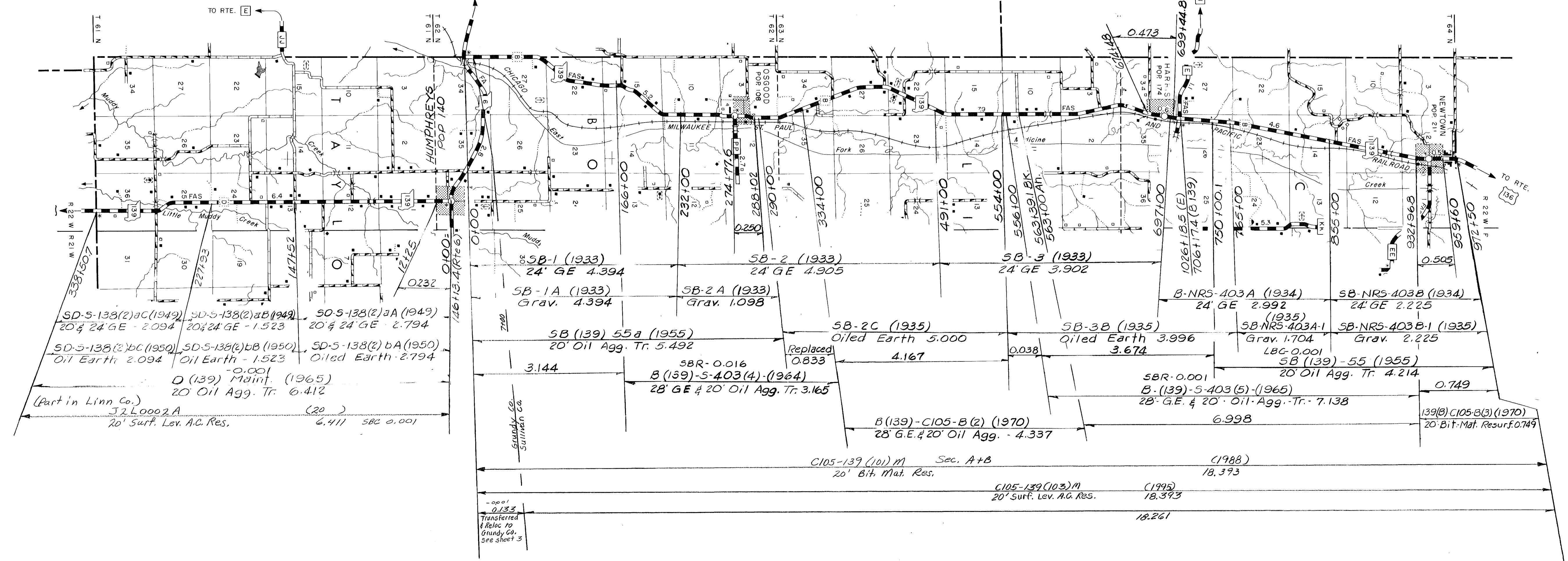
TO RTE. E





ROUTES  
129  
11  
AA

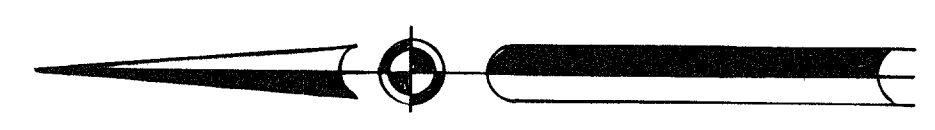
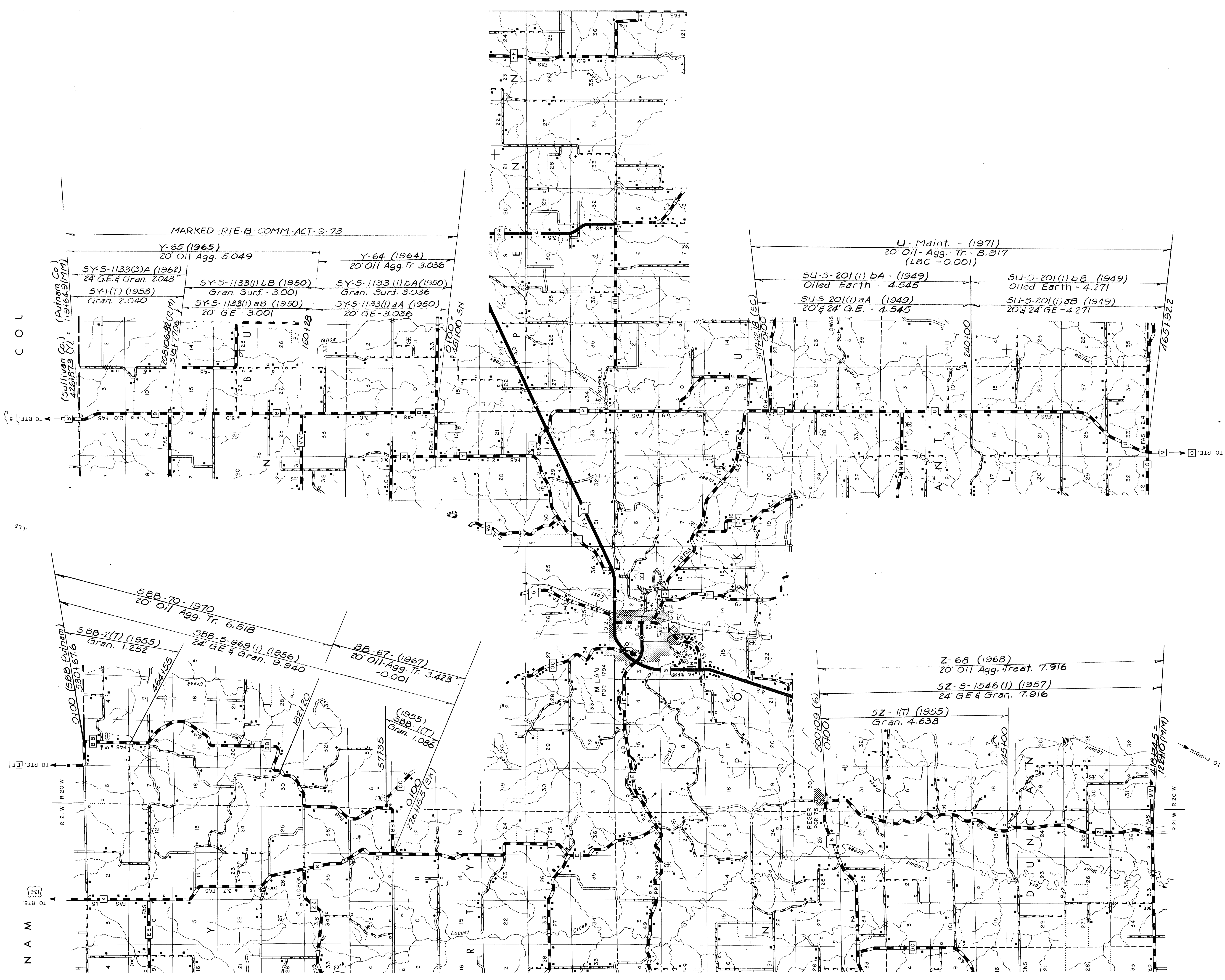




ROUTES  
139  
UU  
VV

105 SHEET 4 OF 12  
SULLIVAN



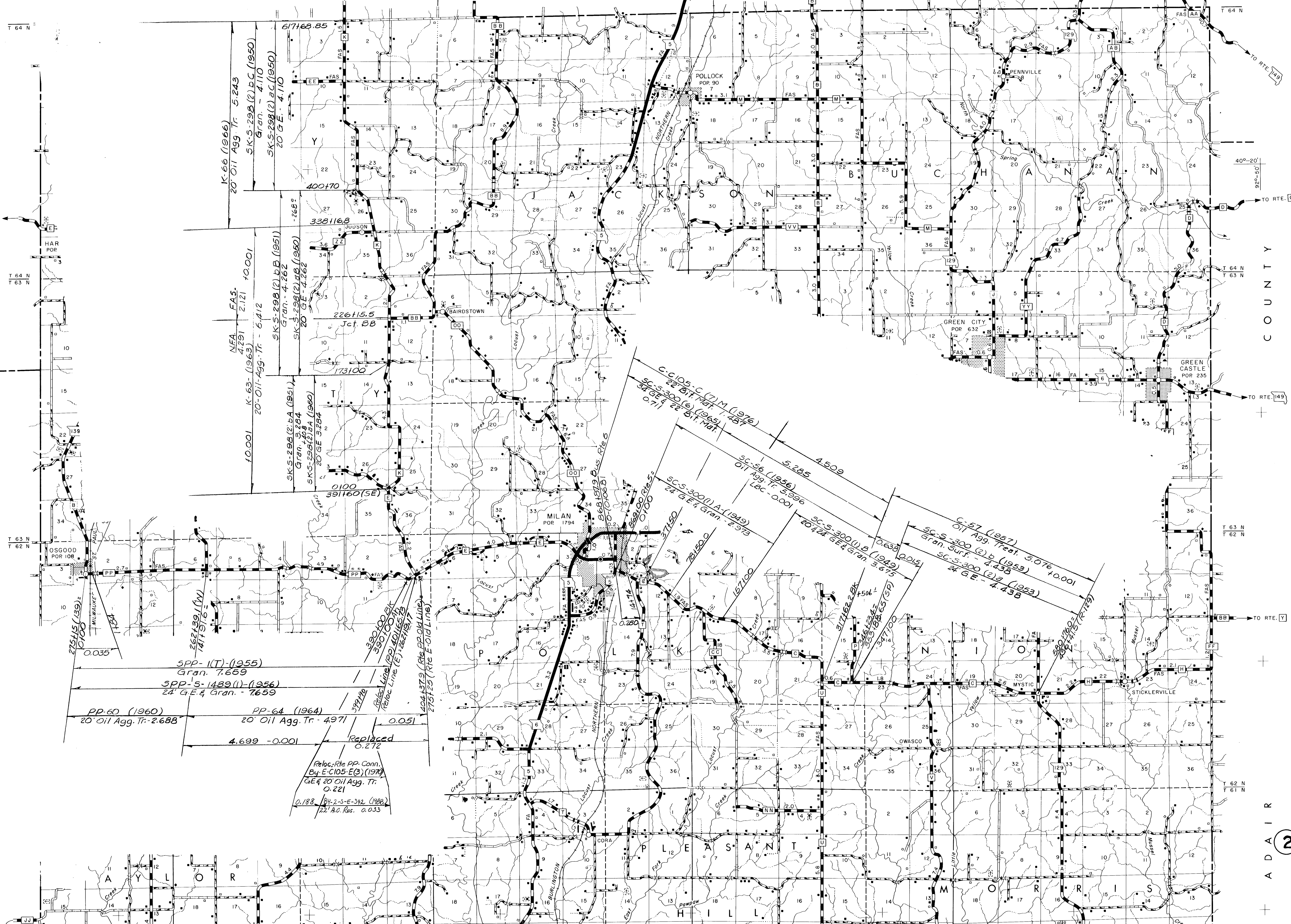


ROUTES  
B  
U  
Z  
BB

② 105 SHEET 5 OF 12  
SULLIVAN



MERCER COUNTY



COUNTY

ADAIR

ROUTES  
C  
K  
PP

② 105 SHEET 6 OF 12  
SULLIVAN

K-66 (1966)  
20' Oil Agg. Tr. 5.243

SK-5-298 (2) bC (1950)  
Gran. - 4.110

SK-5-298 (2) bC (1950)  
20' G.E. - 4.110

NFA - FAS.  
4.291 2.121 +0.001

K-63 - (1963)  
20' Oil Agg. Tr. - 6.412

SK-5-298 (2) bB (1951)  
Gran. - 4.262

SK-5-298 (2) bA (1950)  
20' G.E. - 4.262

SK-5-298 (2) bA (1951)  
Gran. - 3.284

SK-5-298 (2) bA (1950)  
20' G.E. - 3.284

C-C-105-C (7) M (1976)  
22' Bit. Mat. 1.457

SC-5-300 (1) A (1949)  
24' G.E. Gran. - 2.978

SC-5-300 (1) B (1949)  
24' G.E. Gran. - 3.675

C-57 (1957)  
Oil Agg. Treat. 5.076 +0.001

SC-5-300 (2) b (1953)  
Gran. Surf. - 4.438

SC-5-300 (2) a (1953)  
24' G.E. - 4.438

SPP-1(T)-(1955)  
Gran. 7.659

SPP-5-1489 (1)-(1956)  
24' G.E. Gran. - 7.659

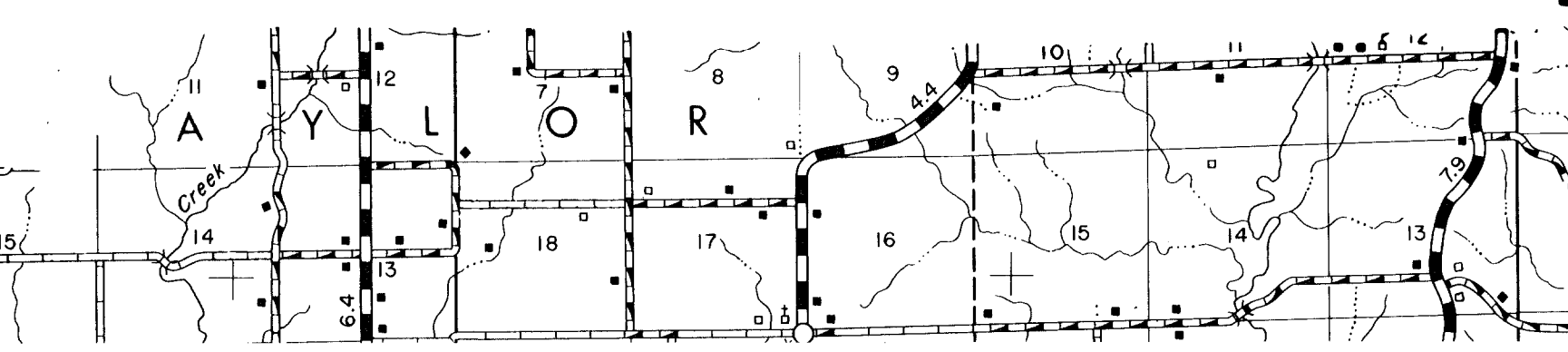
PP-60 (1960)  
20' Oil Agg. Tr. - 2.688

PP-64 (1964)  
20' Oil Agg. Tr. - 4.971

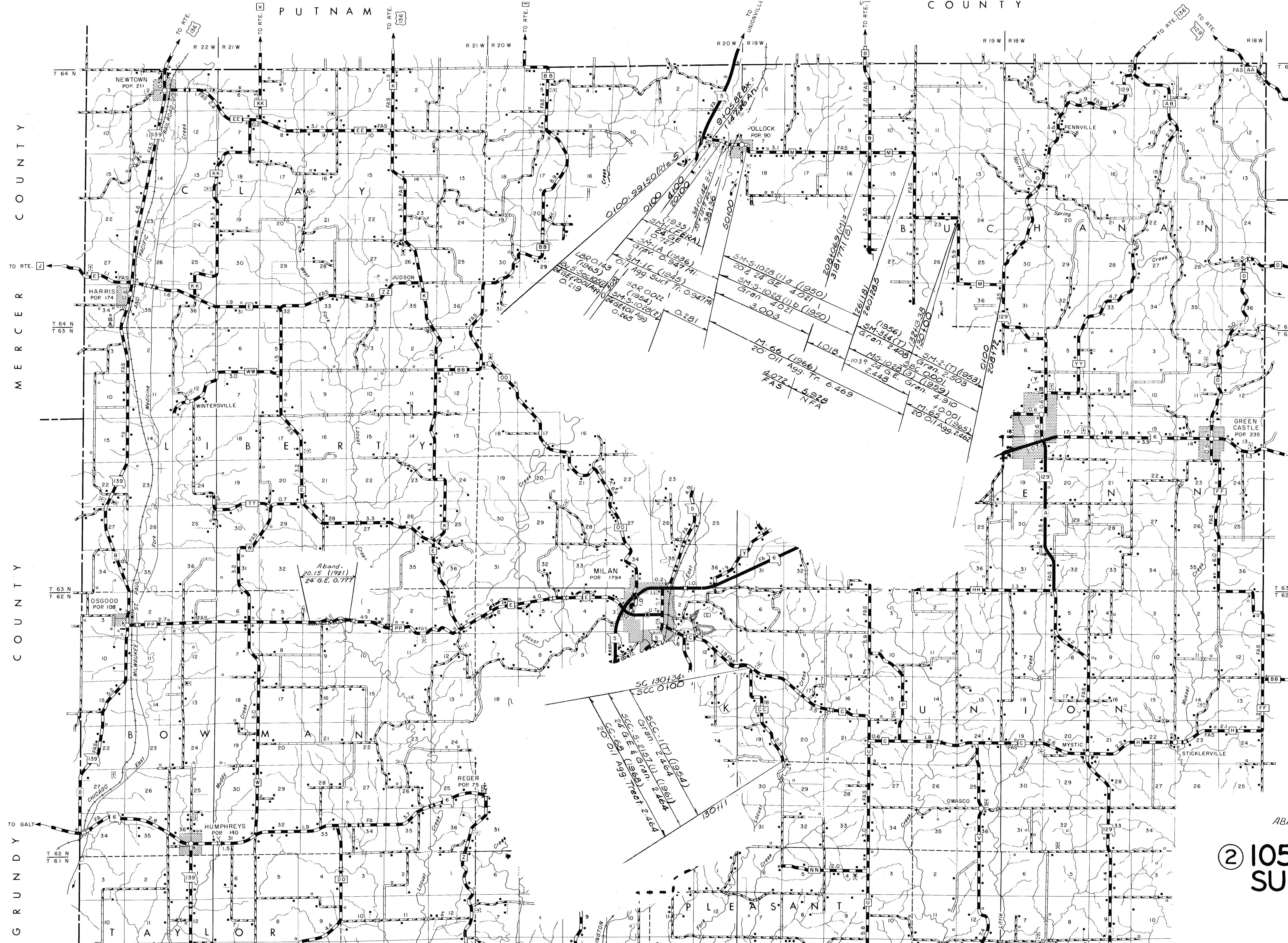
Replaced  
0.272

Reloc. Rte PP Conn.  
By E-C105-E(3) (1970)  
G.E. 20' Oil Agg. Tr.  
0.221

0.188  
22' A.C. Res. 0.033



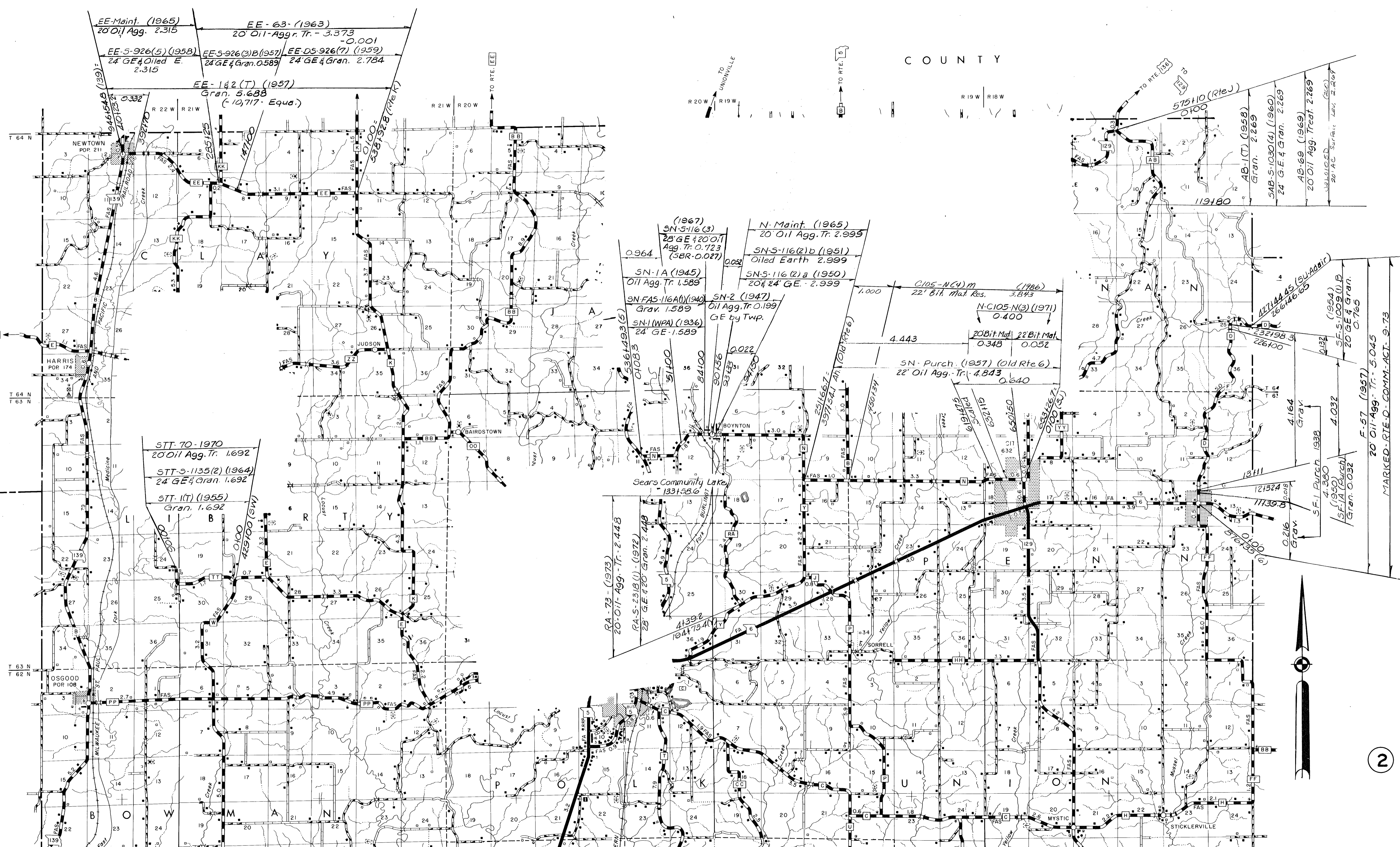




ROUTES  
CC  
M  
ABAND. PP

② 105 SHEET 7 OF 12  
SULLIVAN





COUNTY

ROUTES  
 N  
 TT  
 EE  
 AB  
 RA  
 D

② 105 SHEET 8 OF 12  
 SULLIVAN

STT-70-1970  
 20' Oil Agg. Tr. 1.692  
 STT-5-1135(2) (1964)  
 24' GE & Gran. 1.692  
 STT-1(T) (1955)  
 Gran. 1.692

(1967)  
 SN-3-116(3)  
 25' GE & 20' Oil  
 Agg. Tr. 0.723  
 (SBR-0.027)  
 0.964  
 SN-1A (1945)  
 Oil Agg. Tr. 1.589  
 SN-FAS-116A(1) (1940)  
 Grav. 1.589  
 SN-1 (NPA) (1936)  
 24' GE 1.589  
 SN-2 (1947)  
 Oil Agg. Tr. 0.199  
 GE by Twp.  
 N. Maint. (1965)  
 20' Oil Agg. Tr. 2.999  
 SN-S-116(2)b (1951)  
 Oiled Earth 2.999  
 SN-S-116(2)a (1950)  
 20' & 24' GE - 2.999

C105-N(4) M (1986)  
 22' Bit. Mat. Res. 3.873  
 N-C105-N(3) (1971)  
 0.400  
 20' Bit. Mat. 22' Bit. Mat.  
 0.348 0.052  
 SN-Purch. (1957) (Old Rte 6)  
 22' Oil Agg. Tr. 4.843  
 0.640

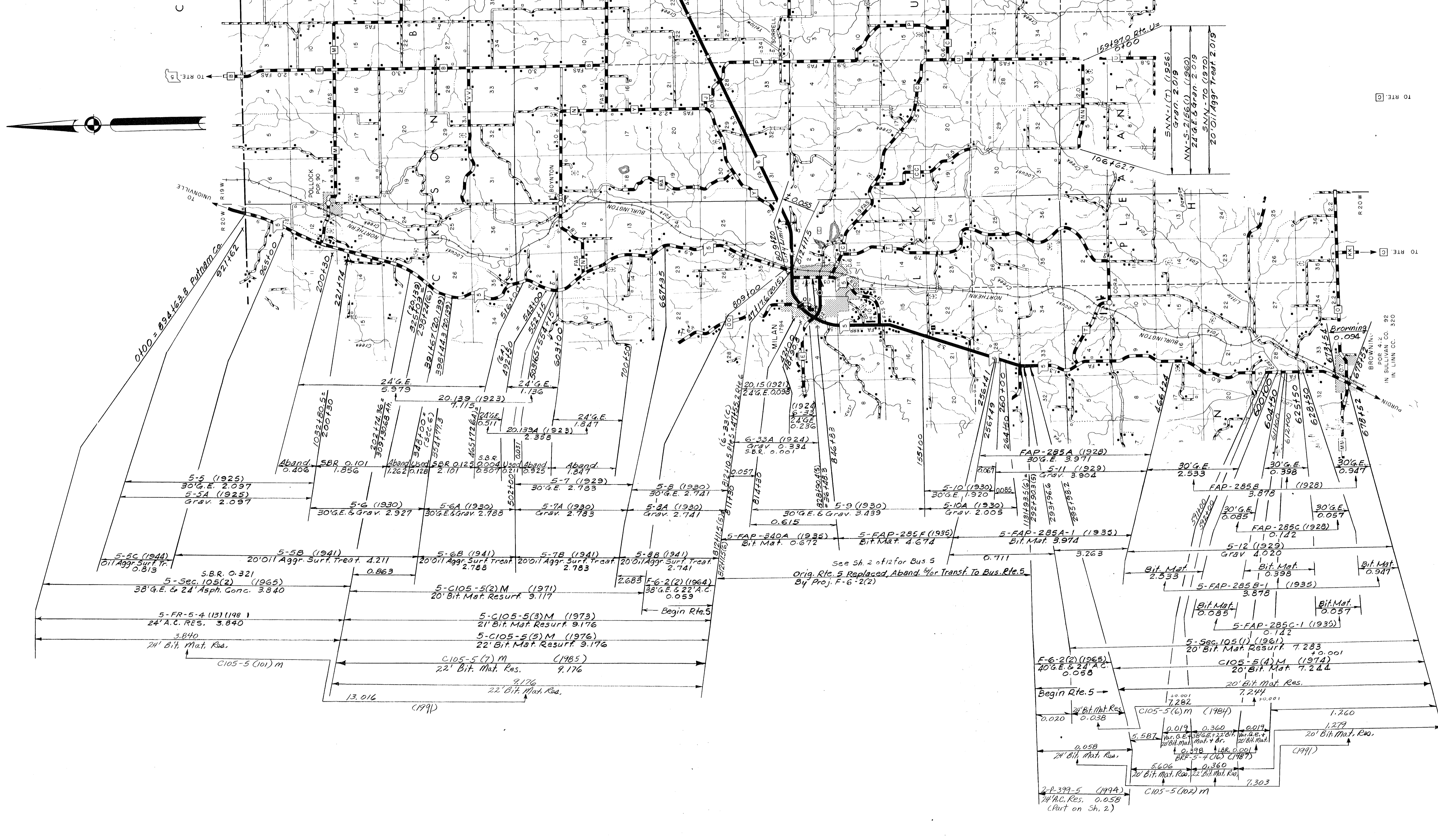
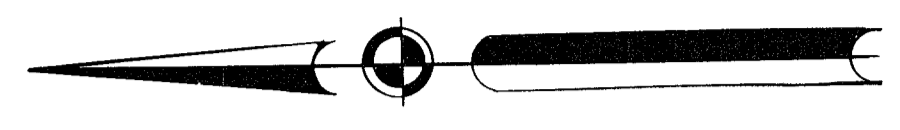
4.164 Grav.  
 4.032 Grav.  
 4.380 Grav.  
 SF-1A (church) (1950)  
 Gran. 0.032  
 F-57 (1957)  
 20' Oil Agg. Tr. 5.045  
 MARKED - RTE-D - COMM-ACT. 9-73

RA-73 (1973)  
 20' Oil Agg. Tr. 2.448  
 RA-S-2318(1) (1972)  
 28' GE & 20' Gran. 2.448

Sears Community Lake  
 1331.586





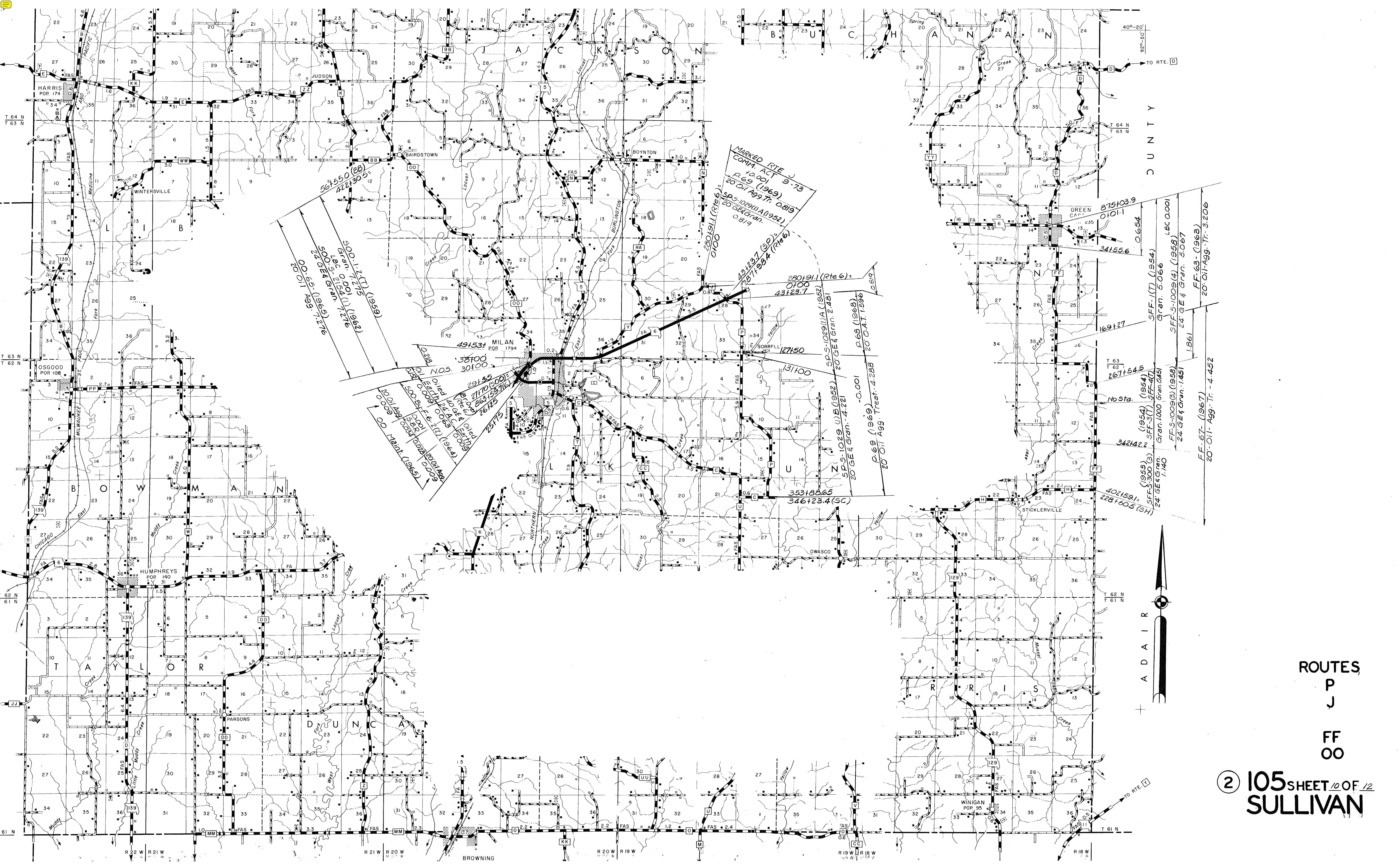


TO RTE. 3

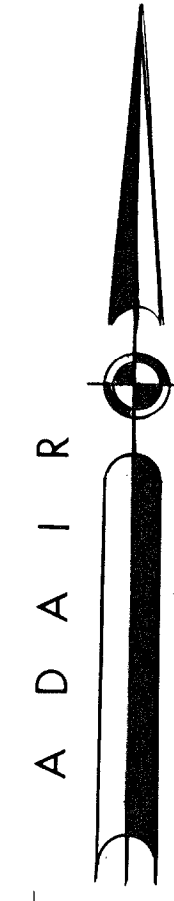
POP. 4,200  
IN SULLIVAN CO. 92  
IN LINN CO. 320

ROUTES  
NN  
5 Part





SULLIVAN COUNTY



ROUTES  
P  
J  
FF  
OO

② 105 SHEET 12 OF 12  
SULLIVAN

MARKED RTE J  
COMM. ACT 9-73  
10.001  
P.69 (1969)  
20' O.I. Agg. Tr. 0.819  
SP-S-1029(U) A (1952)  
20' GE & Gran. 0.819

561550 (88)  
22230.5  
500-1-17.15 (1969)  
LBC 0.001 (1969)  
24' GE & Gran. 1.216  
00-6.5 (1965)  
24' GE & Gran. 1.216  
00-011-495-7-216

291.55  
2170.000  
263153.716  
26125  
231.5  
20' O.I. Agg. Tr. 0.819  
20' GE & Gran. 0.819  
20' O.I. Agg. Tr. 0.819  
20' GE & Gran. 0.819  
20' O.I. Agg. Tr. 0.819  
20' GE & Gran. 0.819  
20' O.I. Agg. Tr. 0.819  
20' GE & Gran. 0.819

280191.1 (Rte 6) =  
0100  
43123.7

SP-S-1029(U) A (1952)  
20' GE & Gran. 2.481

353188.65  
346123.4 (SC)

SP-S-1029 (U) B (1952)  
20' GE & Gran. 4.221

P.69 (1969) -0.001  
20' O.I. Agg. Tr. 4.228  
20' O.I. Agg. Tr. 1.896

875103.9  
0101.1  
34155.6  
0.654

SFF-1(T) (1954)  
Gran. 5.066

SFF-S-1009(A) (1958)  
LBC 0.001  
24' GE & Gran. 5.067

169127

No Sta.  
(1954) (1954)  
SFF-3(T) SFF-4(T)  
Gran. 1000 Gran. 0.45

342142.2

FF-S-1009(B) (1958)  
24' GE & Gran. 1.451

FF-67- (1967)  
20' O.I. Agg. Tr. 4.452

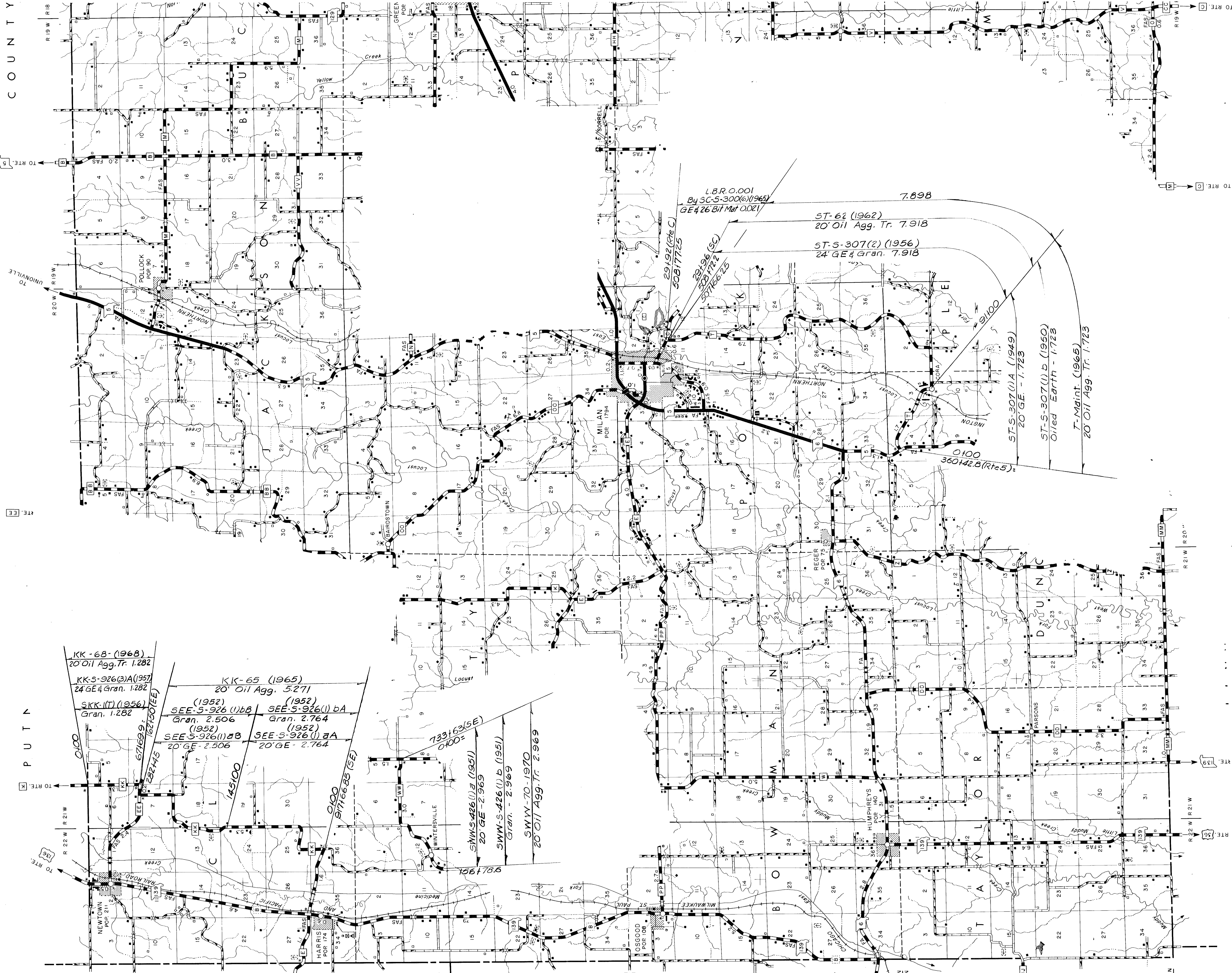
402159.1  
228160.5 (SH)  
SFF-S-300 (3)  
24' GE & Gran. 1.140

1.861

TO RTE. 17

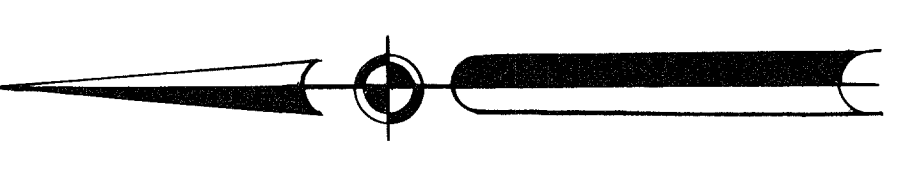


COUNTY



KK-68- (1968)  
 20' Oil Agg. Tr. 1.282  
 KK-S-926(2)A (1957)  
 24' GE & Gran. 1.282  
 S-KK-17 (1956)  
 Gran. 1.282  
 67169.9  
 282.45  
 162150 (EE)  
 KK-65 (1965)  
 20' Oil Agg. 5.271  
 (1952) SEE-S-926 (1) bB Gran. 2.506  
 (1952) SEE-S-926 (1) bA Gran. 2.764  
 (1952) SEE-S-926 (1) aB 20' GE - 2.506  
 (1952) SEE-S-926 (1) aA 20' GE - 2.764  
 733163 (SE)  
 0400-  
 SWW-S-426 (1) B (1951)  
 20' GE - 2.969  
 SWW-S-426 (1) b (1951)  
 Gran. - 2.969  
 SWW-70-1970  
 20' Oil Agg. Tr. 2.969

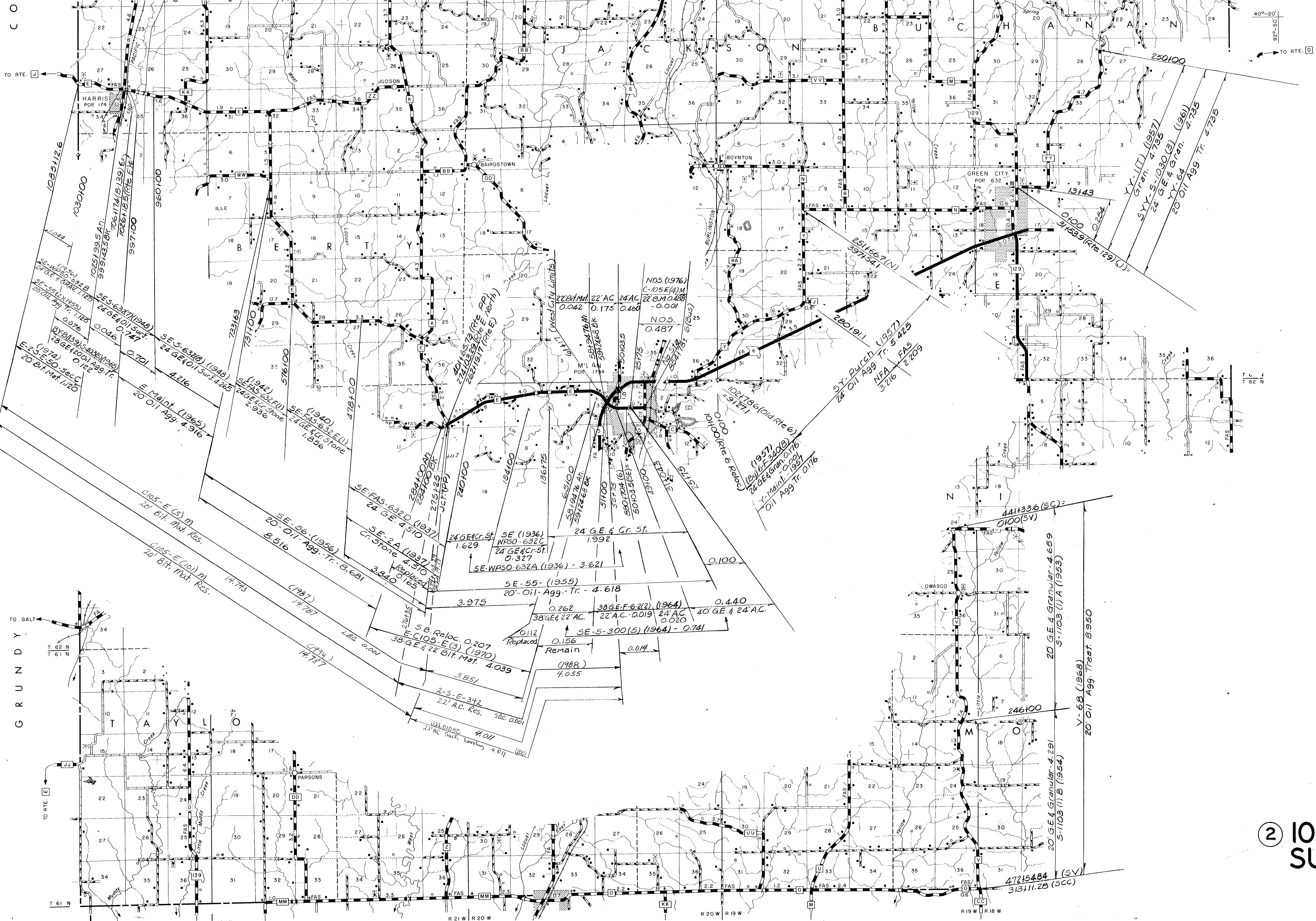
L.B.R. 0.001  
 By 3C-S-300(6) (1965)  
 GE 426 Bit Mat 0.021  
 29192 (Rte C)  
 5081725  
 29196 (SC)  
 325 H22  
 5076625  
 7.898  
 ST-62 (1962)  
 20' Oil Agg. Tr. 7.918  
 ST-S-307(2) (1956)  
 24' GE & Gran. 7.918  
 0.100  
 360142.8 (Rte 5)  
 ST-S-307 (1) A (1949)  
 20' GE - 1.723  
 ST-S-307 (1) b (1950)  
 Oiled Earth - 1.723  
 T-Maint. (1965)  
 20' Oil Agg. Tr. 1.723



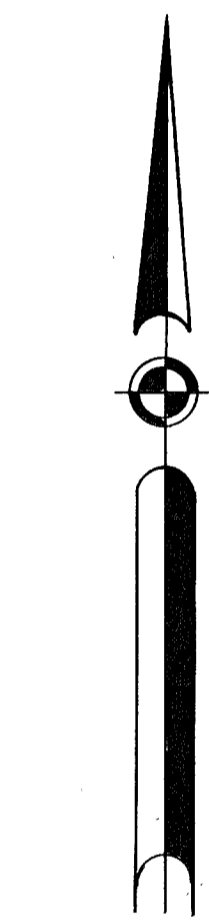
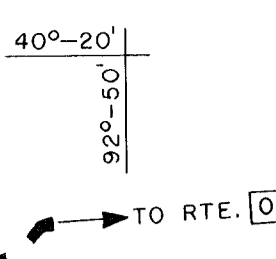
ROUTES  
 T  
 WW  
 KK

② 105 SHEET 11 OF 12  
 SULLIVAN





C O  
 TO RTE. J  
 TO GALT  
 TO RTE. E  
 TO RTE. U  
 TO RTE. V



ROUTES  
 YY  
 YE  
 V

② 105 SHEET 12 OF 12  
 SULLIVAN